



EBU

OPERATING EUROVISION AND EURORADIO

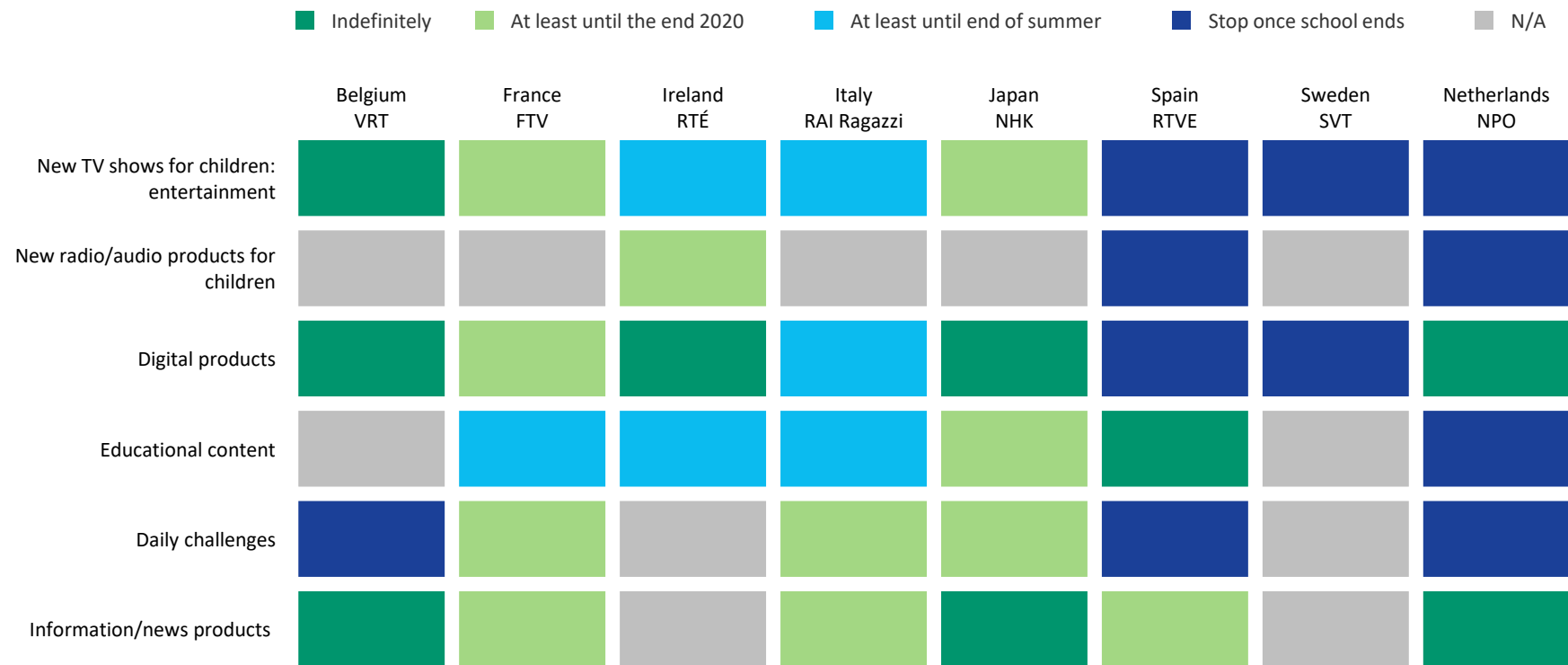
INTERNAL USE: This document is for the exclusive internal use of EBU Members

COVID-19 CRISIS PSM KIDS LESSONS LEARNED

BASED ON A SURVEY AMONG THE EBU KIDS COMMUNITY CONDUCTED IN MAY 2020

LONGEVITY OF COVID-19 CONTENT

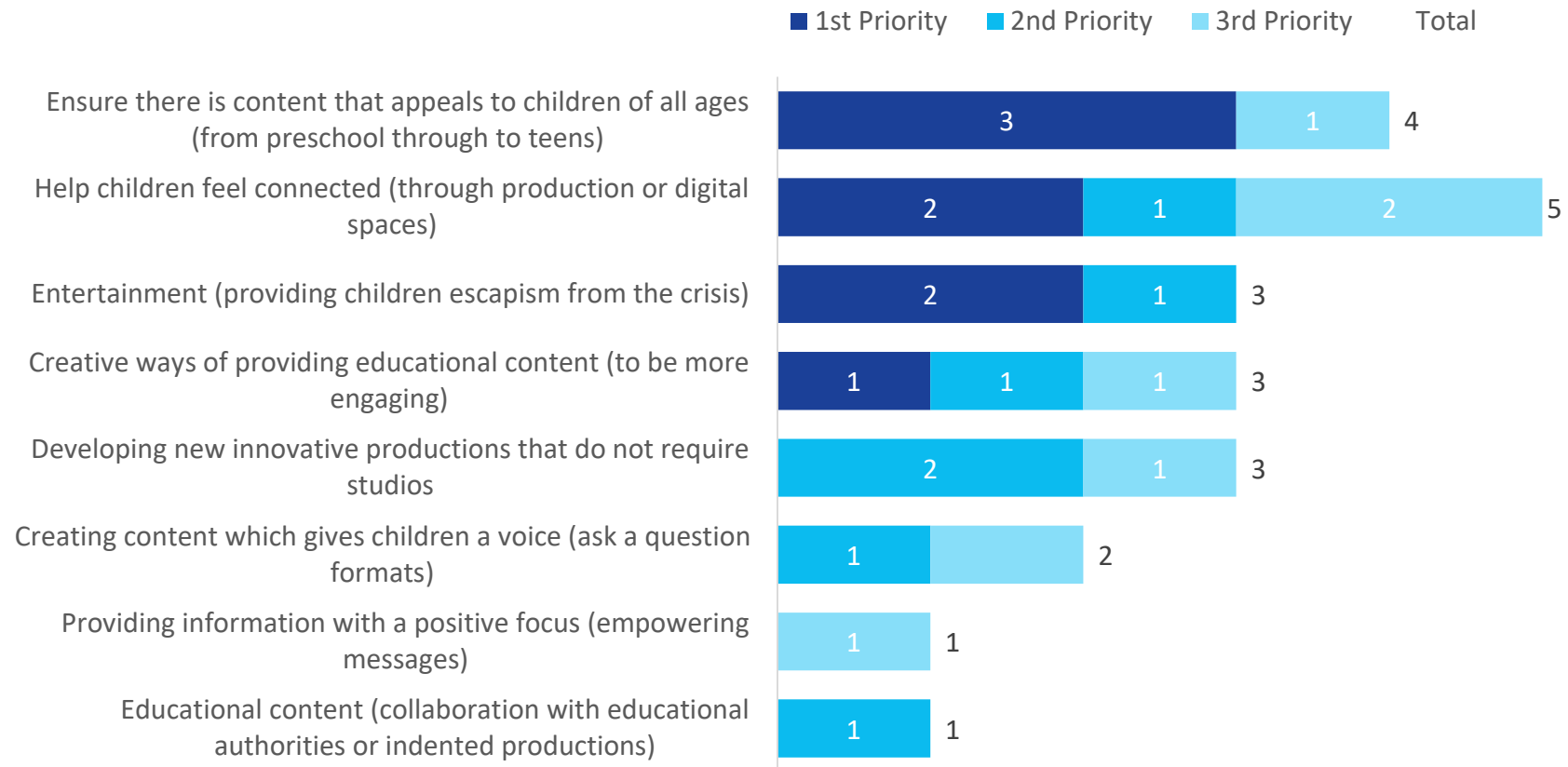
PSM ORGANIZATIONS MOSTLY INTENT TO KEEP CONTENT IMPLEMENTED DURING THE COVID-19 CRISIS UNTIL END OF 2020



Q2. Does your organization intend to keep the new or expanded children's content you have implemented during the COVID-19 crisis? For how long will you keep them?

STRATEGIC PRIORITIES FOR THE YEAR AHEAD

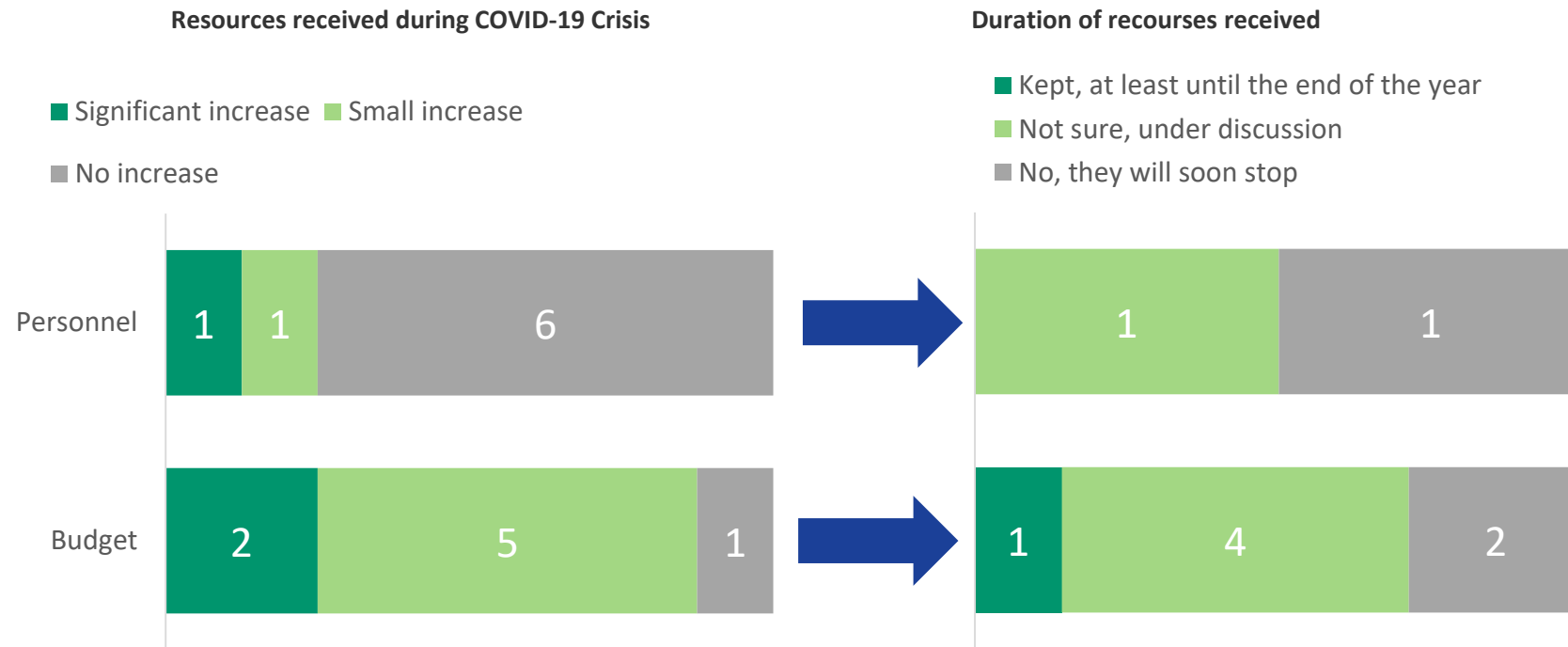
PSM TOP PRIORITIES ARE TO ENSURE THEY HAVE CONTENT THAT APPEALS TO ALL AGES AND THAT THEY HELP CHILDREN FEEL CONNECTED



Q3. In the next year, which of the following priorities identified during the COVID-19 crisis will remain a key strategic priority for your organization?(Please select up to three priorities from the below list, with the most important being the 1st Priority)

RESOURCES TO DELIVER SERVICES DURING COVID-19

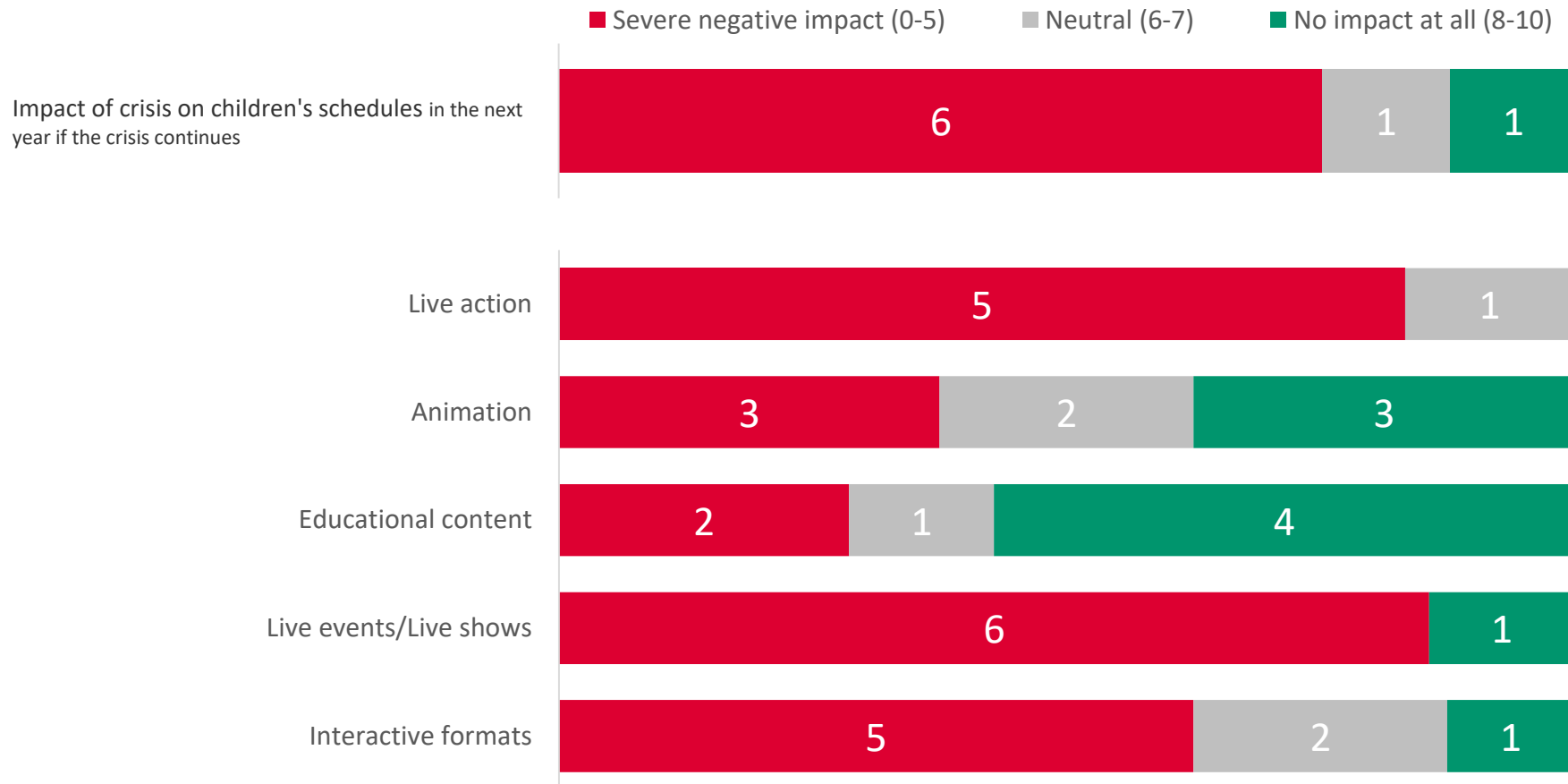
MOST PSM ORGNIAZTIONS SOURCED ADDITIONAL BUDGET TO DELIVER KIDS SERVICES TO MEET THE DEMANDS OF THE CRISIS BUT ONLY TWO RECEIVED ADDITIONAL HUMAN RESOURCES



Q5. During the crisis period did your organization increase resources for children’s services, in terms of budget or personnel?

Q6. If yes, will these increases be maintained in the future?(If no, please select N/A)

IMPACT OF CRISIS ON CHILDREN'S SCHEDULES



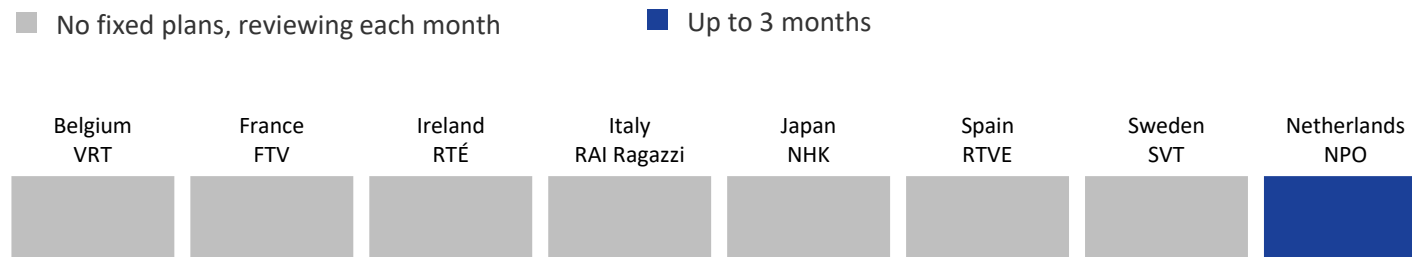
Q8. If the crisis continues past the end of the year, how much impact do you anticipate on your children's schedules in the next year?

Q9. Which children's production would be the most impacted with long-term (past the end of the year) production restrictions?

FUTURE OF PRODUCTION RESTRICTIONS UNCERTAIN

PRODUCTION RESTRICTIONS ARE MOSTLY BEING REVIEWED MONTHLY

New production restriction in place for:



Q7. At this moment, for how long, does your organization plan to keep new production restriction protocols due to the coronavirus?

MEDIA INTELLIGENCE SERVICE

This European Broadcasting Union (EBU) report is published by the EBU Media Intelligence Service (MIS) in collaboration with EBU Media department.

The information presented in this report would not be possible without the collaboration of the EBU Members Audience Research Community and the EBU Kids Community.

mis@ebu.ch

PUBLICATION

Produced by:
Francesca Cimino
cimino@ebu.ch

Madiana Asseraf-Jacob
asseraf@ebu.ch

June 2020

DISTRIBUTION / CONFIDENTIALITY

This publication is for the exclusive internal use of EBU Members.

The information contained in this document is confidential and only for your internal use.

For detailed guidelines about how you may use this document and the data contained in it, please refer to our EBU-MIS [Data Use Policy](#) (available at www.ebu.ch/mis).

If you have any doubt about how to use this information, please contact the Media Intelligence Service (mis@ebu.ch).

DISCLAIMER:

Please note that the EBU is not liable for any errors or inaccuracies in data provided by third parties.

Photo credits: Unsplash

